


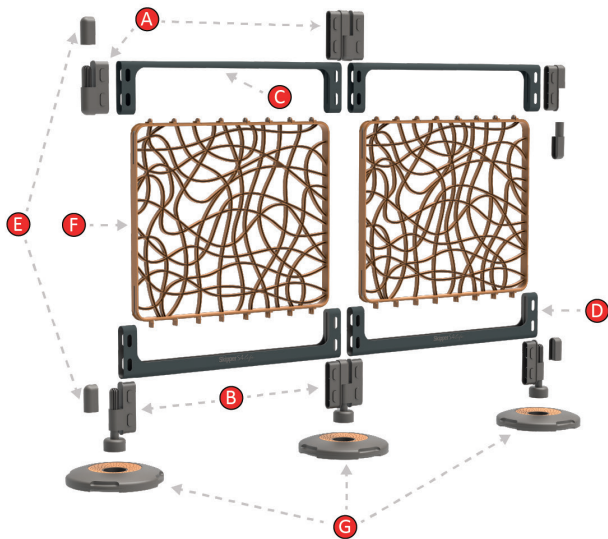
S4Life barrier usage guidelines



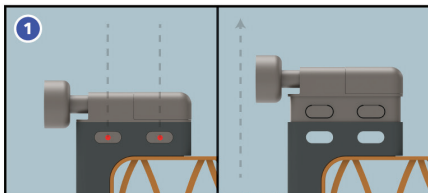

SkipperTM
Beyond modular connectivity

The Skipper S4Life barrier

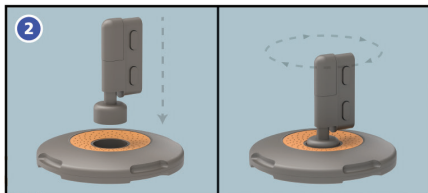
- A** Top Hinge
- B** Bottom Hinge
- C** Top Rail
- D** Bottom Rail
- E** End Cap
- F** Insert
- G** Base



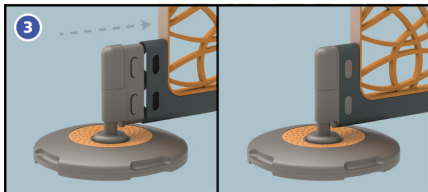
Instructions - connecting the base



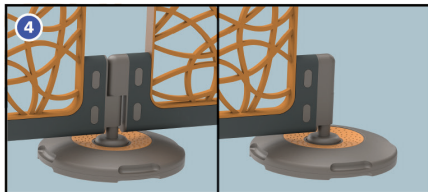
To attach the Base, remove the Bottom Hinge by pressing in the two buttons, and pull out from the Bottom Rail.



Place Bottom Hinge into the Base and twist clockwise until tightly connected.



Connect the Base and Bottom Hinge back into the Bottom Rail until the two buttons clip into place.

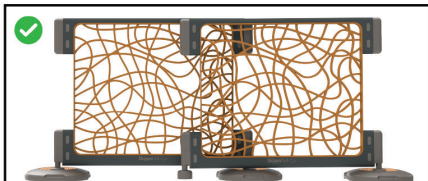


To connect to another unit remove the end caps, or follow previous steps to connect Base to the Bottom Hinge.

Storage guidelines



For storage it is recommended not to leave a Bottom Hinge resting on the floor on a unit that has an adjacent Base attached.



Resting the bottom rail of barrier across the base of a secondary unit is recommended for storage

**Skipper™**

Beyond modular connectivity



Made in the United Kingdom

Skipper™ 12 Wolfe Close,
Parkgate Industrial Estate, Knutsford,
Cheshire, United Kingdom, WA16 8XJ

Web: www.skipper™.com

Tel: +44 (0) 1565 755 865

Email: sales@skipper™.com